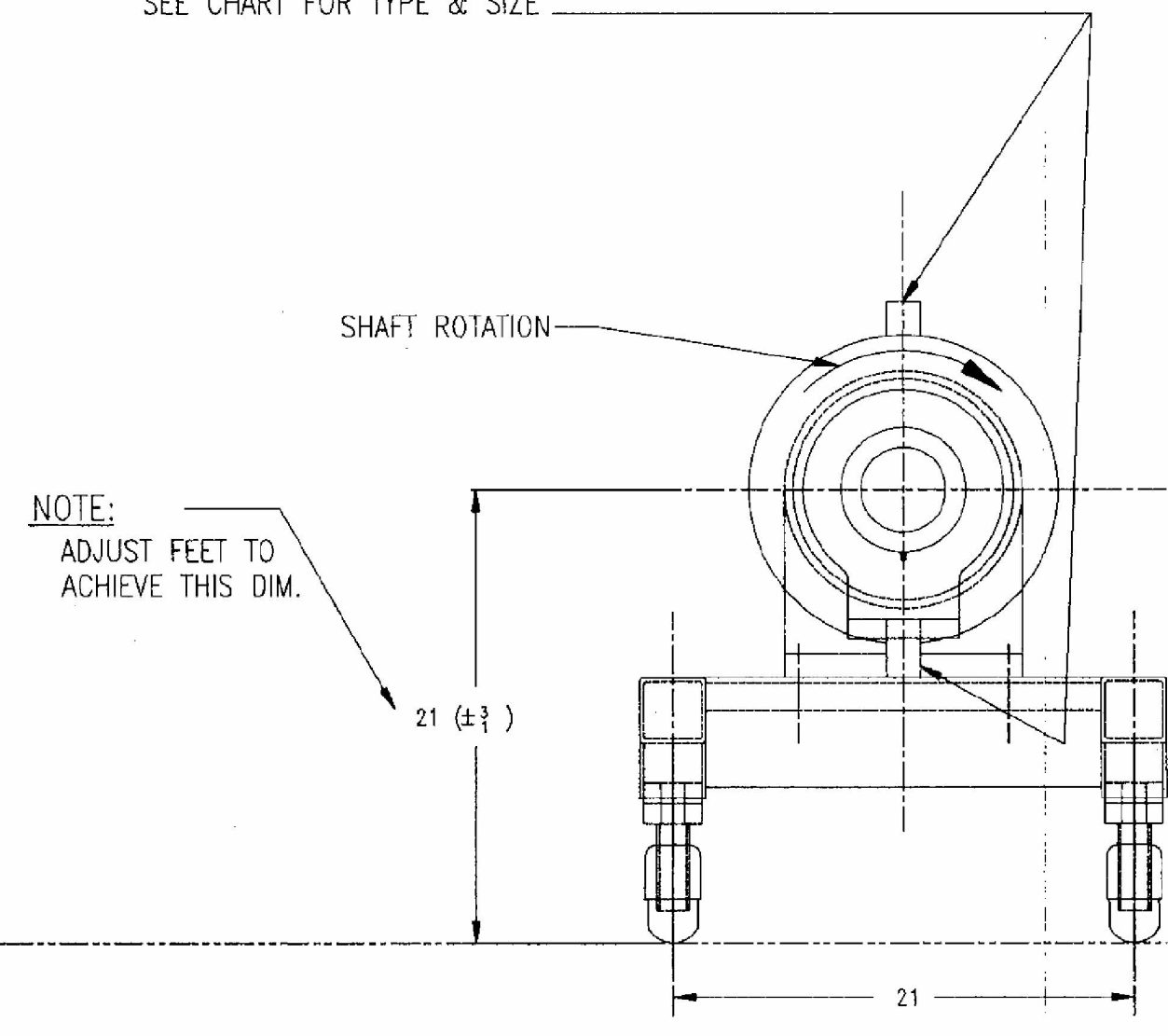


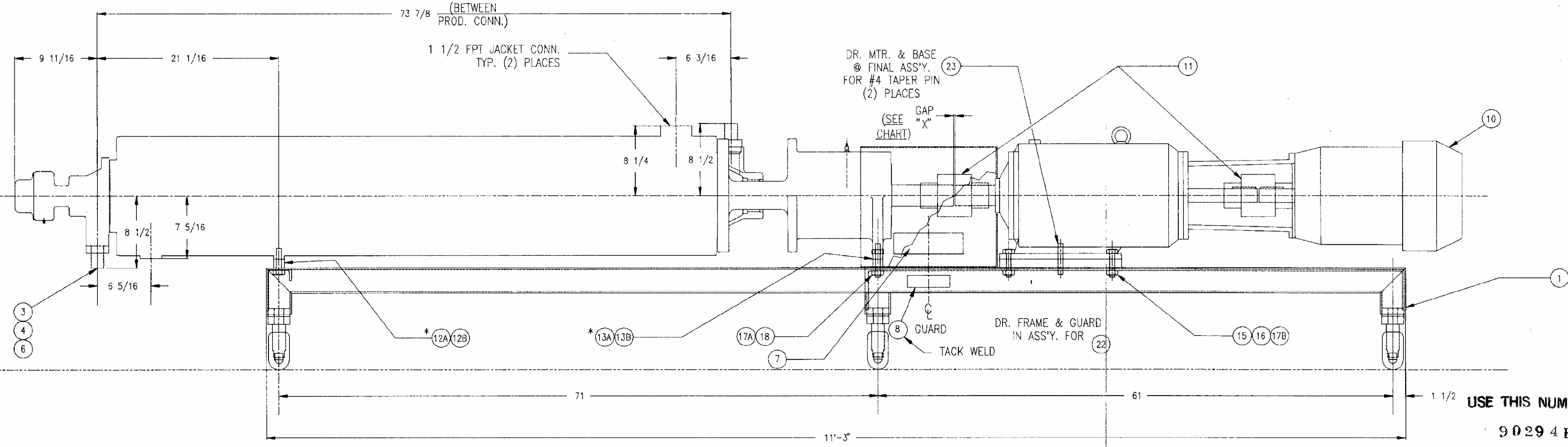
NOTE:
 LOCATE GUARD BY CENTERING ON
 SHAFT & SLIDING CLOSED END TO
 WITHIN 1/16" OF MOTOR DR. & TAP
 (4) 1/4"-20 IN BASE IN ASS'Y. WITH GUARD.

THIS DIM. WILL VARY
 WITH GEARMOTOR.
 IT WILL NOT EXCEED
 DIM. SHOWN.

PRODUCT CONNECTIONS
 SEE CHART FOR TYPE & SIZE



NOTE:
 ADJUST FEET TO
 ACHIEVE THIS DIM.



DR. MTR. & BASE
 @ FINAL ASS'Y.
 FOR #4 TAPER PIN
 (2) PLACES

(SEE GAP
 "X"
 CHART)

DR. FRAME & GUARD
 IN ASS'Y. FOR
 TACK WELD

USE THIS NUMBER
 90294E
 WHEN CORRESPONDING
 OR ORDERING PARTS

* PARTS NOT ALWAYS REQ'D
 USE ONLY IF CALLED FOR ON
 MATERIAL LIST. IF LESS
 THAN 1/8 SHIM IS REQ'D., MAKE
 SHIMS AS REQ'D. IN ASSEMBLY.

NOTE: TACK WELD ANY MOUNTING
 BARS USED TO FRAME AT ASS'Y.

C.S. FRAME	-----	----	.016	2" MPT	3/16	1080T10	R92	230/460	222	20	2500 LB.
REMARKS	SHAFT HTR	CYL. SHIM	MTR. SHIM	PRODUCT CONNS.	DIM X GAP	SHAFT COUP.	GEAR CASE	ELECT. REQ'D.	CYL. RPM	MOTOR H.P.	APPROX. NET WT.

CHERRY-BURRELL
 AMCA INTERNATIONAL
 PROCESS EQUIPMENT DIVISION

THE INFORMATION CONTAINED HEREON IS CONFIDENTIAL AND MUST NOT BE COPIED OR DISCLOSED TO OTHERS UNLESS AUTHORIZED BY CHERRY-BURRELL CORPORATION.

FOR GEN. ASS'Y. 1 CYL. MED. DUTY
 6" X 72" W/ BWS JACKET

DRAWN BY	J.E.M.	90294E C
ENGR. CHECK BY	DHB	12/28/90
SERIAL NO.		SIZE D
DRAWING NO.	906231	